



Vision **COLOR** ^{DW}
SHADES OF CREATIVITY



 **LANDMARK**
CERAMICS



A new landmark in the ceramic industry

Landmark ceramics is an American company, based in Tennessee that has set out to research, manufacture and sell top quality porcelain ceramics in North America, taking advantage of the proven experience of the Gruppo Concorde, an international leader in the sector. Technological innovation, market presence, attention to detail, the welfare of people and the environment, efficient service and a thorough product range make Landmark a new benchmark in the North American market for those who are looking for a reliable partner for any building and architecture project using US made top quality porcelain tiles.



“Design Work” is a framework of ceramic surfaces for contemporary architectural projects. The floor and wall collections play with evocative materials drawing out sophisticated ceramic combinations with new design materials. Design Work is synonymous with design freedom: the colors are chosen to maximize the possible combinations between collections and within them. This creative freedom is dynamic and durable, thanks to the technical characteristics of porcelain stoneware, for use in a variety of elegant, modern residential and commercial environments.



Vision Color widens Landmark's resin-effect selection with **8 tones, inspired by hand-brushed resin**, reproduced in all its depth. A collection where colors, nuances, and contrast are the main features characterizing every project. Vision Color can be matched to other Design Work Collection to obtain original combinations with a strong personality, enhancing the style of any environment, both residential and commercial.

All-around color concept.

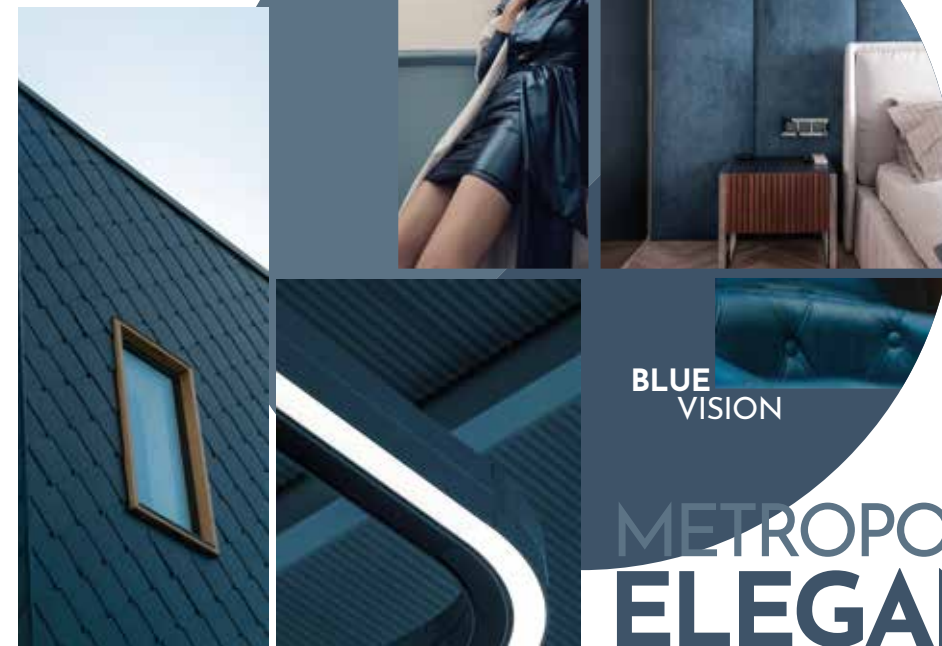
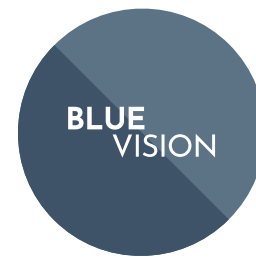
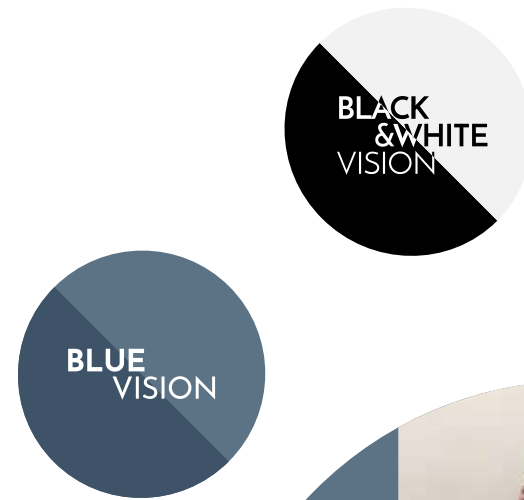
Vision Color explores the resin world out of Vision collection and open new paths to designers with a wide surface offering: different formats, subway tile size, and contemporary mosaics. Every color has an alter ego, a double soul, that is represented by either a slight shade variation or a total opposite. This change allows designers to play with one solid tone or create vibrant and delicate contrasts with either 12x24 or smaller sizes such as the subway 3x12. The offer is completed by the indispensable Black and White colors.



INTERNATIONAL APPROACH



CHROMATIC VISION



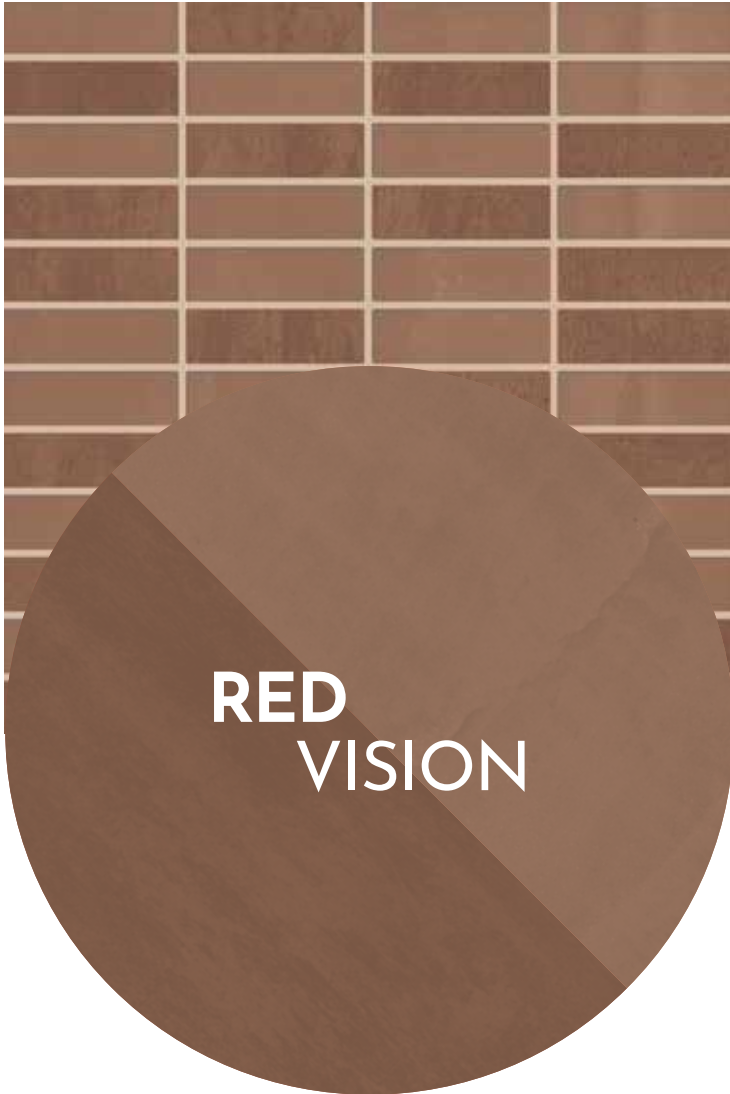
METROPOLITAN ELEGANCE



SOPHISTICATED BINOMIAL

LAVA RED
PALE RED

A COMBINATION OF **WARM COLORS** THAT GIVES CHARACTER TO SURFACES AND LIGHTS UP THE ENVIRONMENT WITH MAGNIFICENT SHADES.



RED
VISION



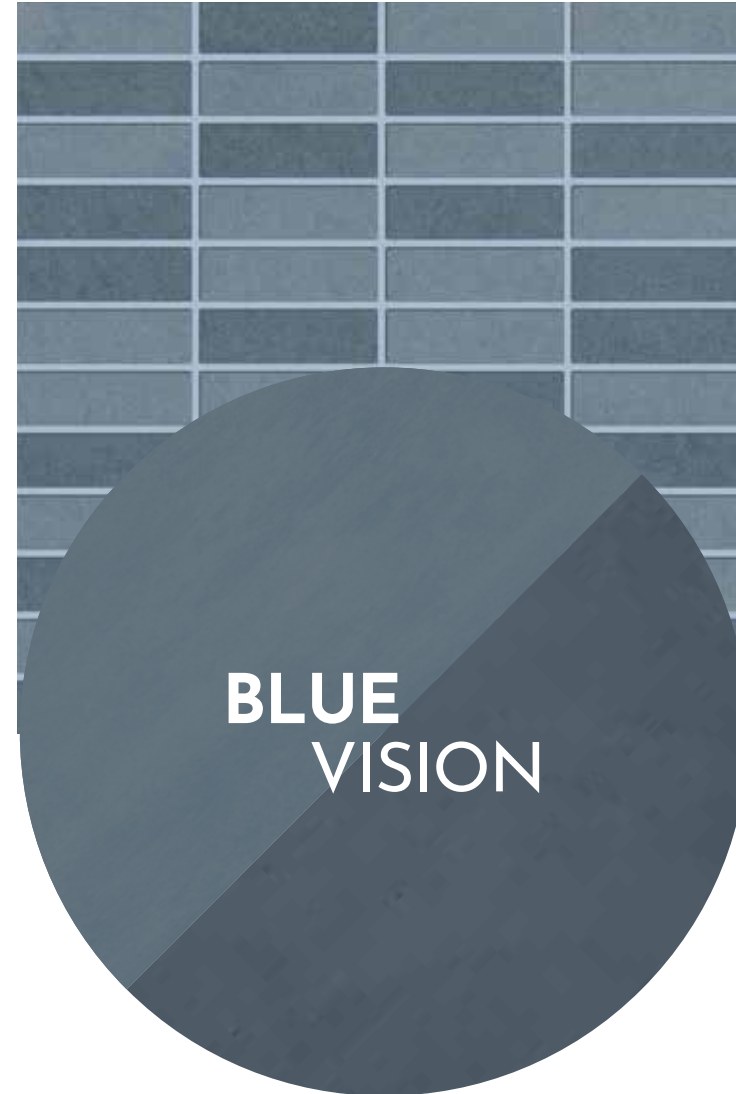
GREEN
VISION

FOREST GREEN
JADE GREEN

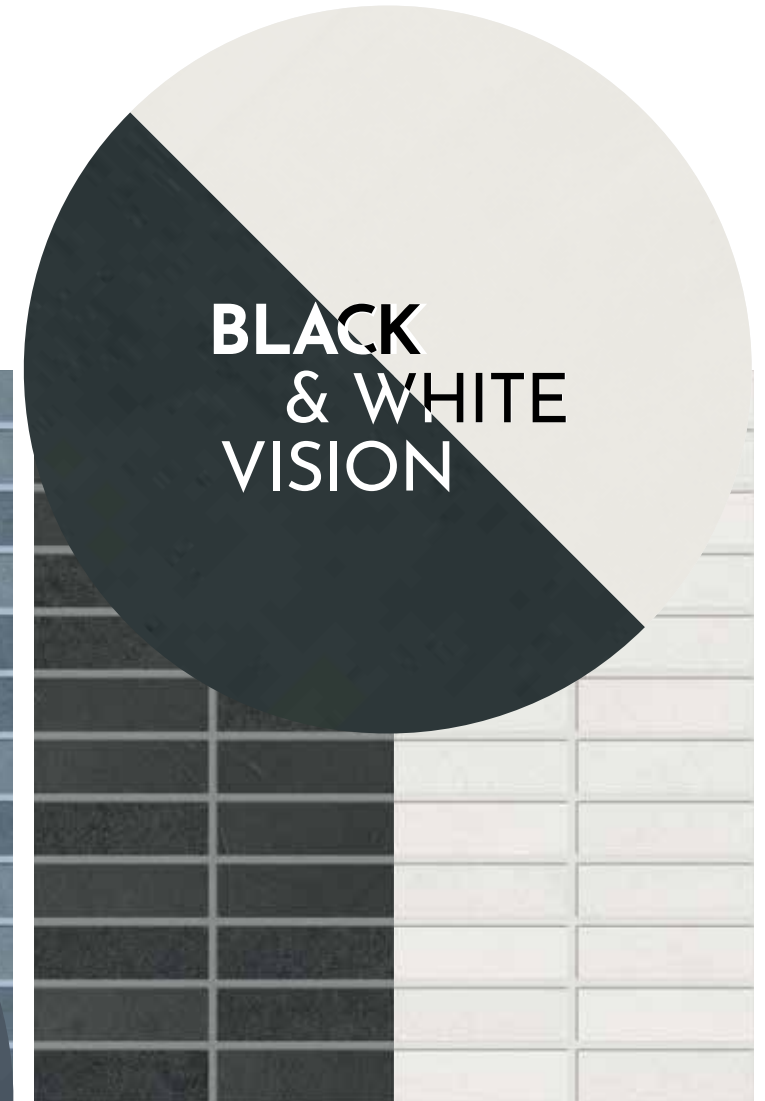
THE **COLORS OF NATURE** BECOME PROTAGONISTS IN EVERY INTERIOR DESIGN PROJECT WITH **TONE-ON-TONE COMBINATIONS**.

OCEAN BLUE
RIVER BLUE

ELEGANT **ATLANTIC SHADES** DESIGNED TO GIVE A COMFORTABLE LOOK WITHOUT SACRIFICING **ELEGANCE**.



BLUE
VISION



BLACK
& WHITE
VISION

STAR BLACK
STAR WHITE

ELEGANT, ESSENTIAL, REFINED. A PERFECT BLEND BETWEEN **OPPOSITES** THAT NEVER FADES.



BLUE VISION: METROPOLITAN ELEGANCE

With a perfect balance between comfort and style, the combination of the two-color gradients Ocean Blue and River Blue conveys an elegant atmosphere to the living room walls, giving depth to the whole space. Thanks to its versatility, it is possible to **combine Vision Color** with all the surfaces of Landmark's Design Work project.



PROJECT

FLOOR DESIGN

Vision Color Ocean Blue - 12"x24"
Masterplan Cosmopolitan Ash - 24"x24"

WALL DESIGN

Vision Color Ocean Blue - 12"x24"
Vision Color River Blue - 12"x24"
Vision Color Mix Blue Mosaic H - 12"x12"
Masterplan Cosmopolitan Ash - 24"x24"

Surrounded
by energetic
shadows.



PROJECT

FLOOR DESIGN

- Vision Color Ocean Blue - 12"x24"
 - Masterplan Cosmopolitan Ash - 24"x24"
- WALL DESIGN**
- Vision Color Ocean Blue - 12"x24"
 - Vision Color River Blue - 12"x24"
 - Vision Color Mix Blue Mosaic H - 12"x12"
 - Masterplan Cosmopolitan Ash - 24"x24"



VISION COLOR BRINGS A TOUCH OF CREATIVITY TO INTERIOR SPACES, TAKING ADVANTAGE OF THE **SOFT SHADES OF BLUE**. A **CONTEMPORARY** COUNTERPOINT TO GIVE SHAPE TO EXCLUSIVE ENVIRONMENTS.

PROJECT

FLOOR DESIGN

Vision Color Ocean Blue - 12"x24"

WALL DESIGN

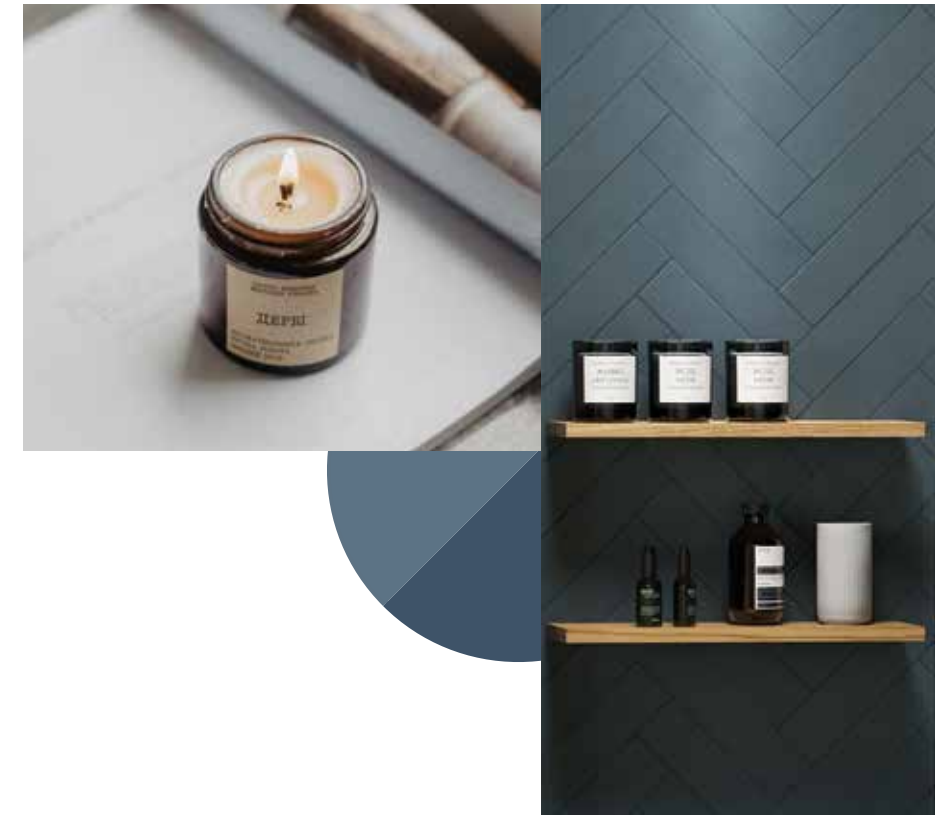
Vision Color Ocean Blue - 12"x24"

Wellness
harmony in
total safety.

PROJECT

FLOOR DESIGN
Felling Honey - 8"x40"
Vision Pearl - 24"x48"
WALL DESIGN
Vision Color Ocean Blue / River Blue - 3"x12"
Vision Pearl - 24"x24"

BLUE
VISION



SURROUNDED BY **SMOOTH SHADES**, THE BATHROOM ACHIEVES A FRESH LOOK WITHOUT LOSING ANY OF THE HIGHER PERFORMANCES OF THE PORCELAIN TILES SUCH AS BEING WATERPROOF, SCRATCHPROOF, ACID-RESISTANT, AND EASY TO KEEP CLEAN.

PROJECT
 BATHTUB
 Felling Honey - 8"x40"
 Vision Pearl - 24"x48"
 WALL DESIGN
 Vision Color Ocean Blue / River Blue - 3"x12"
 Vision Pearl - 24"x24"



LANDMARK'S PORCELAIN TILES SUIT **BATHROOM WALLS PERFECTLY.** THEY PREVENT THE GROWTH OF VIRUSES, GERMS, AND BACTERIA AND THEY CAN BE CLEANED VERY EASILY.



PROJECT
WALL DESIGN
Vision Color Ocean Blue / River Blue - 3"x12"





PROJECT
FLOOR DESIGN
Maple - 8"x40"
WALL DESIGN
Vision Color Ocean Blue - 3"x12"



Unlimited elegance.

RESISTANT AND LONG-LASTING,
VISION COLOR IS SUITABLE FOR
ANY INDOOR APPLICATION.





GREEN VISION: INTERNATIONAL APPROACH

Visible variations in tone of Jade Green and Forest Green surfaces offer a solution that gives greater depth to the setting, **dividing the spaces by intended use**. A light contrast you can play within the combination with other looks coming from the Design Work collections, as Venetian floors lookalike.



PROJECT

FLOOR DESIGN
 Vision Color Jade Green - 12"x24"
 Elite Diamond White - 12"x24"
 WALL DESIGN
 Vision Color Forest Green / Jade Green - 12"x24"
 Vision Color Mix Green Mosaic H 12"x12"
 FURNITURE
 Elite Diamond White - 24"x24"

Light cadences.



PROJECT

FLOOR DESIGN
Vision Color Jade Green - 12"x24"
Elite Diamond White - 12"x24"
WALL DESIGN
Vision Color Forest Green / Jade Green - 12"x24"
Vision Color Mix Green Mosaic H 12"x12"
Elite Diamond White - 12"x24"
FURNITURE
Elite Diamond White - 24"x24"



THANKS TO THE VERSATILITY OF LANDMARK'S PORCELAIN, YOU CAN COUNT ON DIFFERENT PRODUCT CATEGORIES, **MATCHING TILES AND MOSAICS**, TO SATISFY ANY INSTALLATION NEED.



PROJECT
 FLOOR DESIGN
 Elite Diamond White - 12"x24"
 WALL DESIGN
 Vision Color Forest Green / Jade Green - 12"x24"
 Vision Color Mix Green Mosaic H 12"x12"
 FURNITURE
 Elite Diamond White -24"x24"



PROJECT
WALL DESIGN
Vision Color Forest Green - 3'x12'



A pure expression.

VISION COLOR IS A TRANSITION COLLECTION ABLE TO PLAY WITHIN AND OUTSIDE THE DESIGN WORK PROJECT, THANKS TO THE AFFINITY WITH THE DIFFERENT LOOKS OF THE LANDMARK PORTFOLIO.



VISION COLOR IS ENHANCED BY A RANGE OF **CONTEMPORARY MOSAICS** WHERE THE BLUE, RED AND GREEN COLORS BLEND TOGETHER TO OBTAIN VIBRANT PERSONALITY AND ARE AVAILIABLE IN BLACK AND WHITE SOLID COLORATIONS FOR CONTEMPORARY AND NEAT INSTALATION.



PROJECT
WALL DESIGN
Vision Color Mix Green Mosaic H - 12"x12"



RED VISION: POWERFUL COMBINATIONS

Solid shades of Lava Red and Pale Red colors cover walls in a lavish space conveying a **strong personality**. Combined with a bright porcelain surface, they explore the resin look with new paths for architects and designers.



PROJECT

FLOOR DESIGN
 Vision Color Lava Red - 12"x24"
 Feeling Oak - 8"x40"
 WALL DESIGN
 Vision Color Lava Red / Pale Red - 12"x24"
 Vision Color Pale Red - 3"x12"
 COUNTER
 Vision Color Mix Red Mosaic H - 12"x12"

Chromatic affinities.



PROJECT

FLOOR DESIGN

Vision Color Lava Red - 12"x24"

Feeling Oak - 8"x40"

WALL DESIGN

Vision Color Lava Red / Pale Red - 12"x24"

Vision Color Pale Red - 3"x12"

COUNTER

Vision Color Mix Red Mosaic H - 12"x12"

VISION COLOR MOSAIC G MIX RED
CAN BE COMBINED OVER-FURNISHING
WITH DIFFERENT LAYING PATTERNS,
TO OBTAIN **ORIGINAL GEOMETRIC
COMPOSITIONS.**



PROJECT
WALL
Vision Color Pale Red 3"x12"
COUNTER
Vision Color Mix Red Mosaic H - 12"x12"

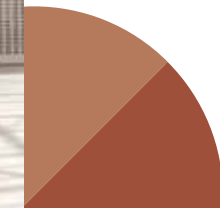


PROJECT

FLOOR DESIGN
 Feeling Honey - 8"x40"
 WALL DESIGN
 Vision Color Pale Red - 12"x24"
 Masterplan Precious Ivory - 24"x48"
 VOLUMES
 Vision Color Lava Red - 3"x12"



VISION COLOR IT IS EASY TO CLEAN. DOESN'T ABSORB STAINS AND RESISTANT TO ANY STRESS COMING FROM HIGH FOOT TRAFFIC BECAUSE IT'S **MADE WITH THE HIGHEST QUALITY OF PORCELAIN TILE.** A PERFECT SOLUTION IN ANY SETTING: COMMERCIAL OR RESIDENTIAL ON WALL AND FLOOR.



Performance
 behind beauty.



BLACK & WHITE VISION: SOPHISTICATED BINOMIAL

The contrast between black and white surfaces of Vision Color achieve a refined appearance in residential and commercial spaces. Thanks to an **essential look**, they are ideal for covering walls and floors in every modern space.



PROJECT

FLOOR DESIGN

Vision Color Star Black - 12"x24"

WALL DESIGN

Vision Color Star Black - 12"x24"

Vision Color Star White - 3"x12"

Vision Color Star Black Mosaic H - 12"x12"

The timeless attraction of opposites.



PROJECT

FLOOR DESIGN

Vision Color Star Black - 12"x24"

Vision Color Star White - 12"x24"

Feeling Chestnut - 8"x40"

WALL DESIGN

Vision Color Star Black - 12"x24"

Vision Color Star White - 3"x12" / 12"x24"

Vision Color Star Black Mosaic H - 12"x12"

Soul Piedepoule Pattern - 12"x24"



VISION COLOR OFFERS INFINITE SOLUTIONS TO PLAY WITH THE **DOUBLE SHADE** OF EACH COLOR OR CREATE SHARP CONTRASTS BETWEEN BLACK AND WHITE.

PROJECT

FLOOR DESIGN

Vision Color Star Black - 12"x24"

Vision Color Star White - 12"x24"

Feeling Chestnut - 8"x40"

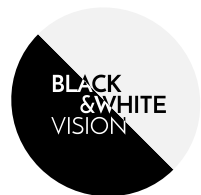
WALL DESIGN

Vision Color Star White - 12"x24"

Soul Piedepoule Pattern - 12"x24"



PORCELAIN TILES OF VISION COLOR ARE AIMED AT A CONTEMPORARY SPACE TO ADD **EXPRESSIVENESS AND BEAUTY** WITHOUT SACRIFICING RESISTANCE AND VERSATILITY.



PROJECT
WALL DESIGN
Vision Color Star Black - 3"x12"



MATT FINISH

<p>SUSTAINABILITY</p> <p>RECYCLABLE</p>  <p>Tiles can be recycled inside the production process when not fired yet, or once they have finished their life-cycle can be used as compact base material on the contrary many plastic base material such as vinyl cannot.</p>	<p>SUSTAINABILITY</p> <p>ECO-FRIENDLY AND SAFE</p> 	<p>SUSTAINABILITY</p> <p>ENERGY EFFICIENT</p>  <p>Tile's inherent thermal mass reduces peak heating and cooling, which helps moderate temperature swings in your home.</p>	<p>HEALTH</p> <p>NATURAL INGREDIENTS</p>  <p>Tile is made of clays and other naturally-occurring minerals and does not contain chemicals with potential adverse health effects (pvc, voc, formaldehyde, plastic etc...)</p>	<p>SAFETY/DURABILITY</p> <p>SCRATCH AND DENT RESISTANT</p>  <p>Tile is strong, hard and resistant to most type of scratches. Tile also, being an extremely dense material, doesn't fear any denting damage, like many others flooring materials do.</p>	<p>SAFETY/DURABILITY</p> <p>FADE AND UV RESISTANT</p> 
<p>SUSTAINABILITY</p> <p>FLOOR HEAT FRIENDLY</p> 	<p>SUSTAINABILITY</p> <p>VERY LONG SERVICE LIFE</p>  <p>Tile when properly installed and maintained can last for decades.</p>	<p>SUSTAINABILITY</p> <p>COST SAVING OVER TIME</p>  <p>Thanks to its long service life and easy maintenance, porcelain tile is very cost effective over time when compared to flooring products that need to be replaced more frequently.</p>	<p>SAFETY/DURABILITY</p> <p>RESISTANT TO ACID</p> 	<p>SAFETY/DURABILITY</p> <p>WATER PROOF</p>  <p>Tile is very compact and impervious therefore doesn't absorb. With tile you'll never have to worry about water.</p>	<p>SAFETY/DURABILITY</p> <p>FIRE PROOF</p>  <p>Tile doesn't burn, melt or give off toxic fumes when exposed to fire.</p>
<p>HEALTH</p> <p>PREVENT BACTERIA GROWTH</p>  <p>Tile is completely inhospitable to bacteria. That means no mold or mildew, and a healthier home for you.</p>	<p>HEALTH</p> <p>ZERO ALLERGENES</p>  <p>Tile is both hard and impervious therefore inhospitable to dust mites, bacteria, fungi, mold and other irritants.</p>	<p>HEALTH</p> <p>ZERO SMOKE DEVELOPMENT</p>  <p>Tile never gives off toxic fumes, even when exposed to fire.</p>	<p>SAFETY/DURABILITY</p> <p>DOESN'T BEND</p>  <p>Tile is hard and compact.</p>	<p>SAFETY/DURABILITY</p> <p>PET FRIENDLY</p>  <p>Tile is both dog and cat scratch proof.</p>	<p>SAFETY/DURABILITY</p> <p>RESISTANT TO FROST</p>  <p>Tile is snow and ice proof.</p>
<p>HEALTH</p> <p>ZERO FORMALDEHYDE</p>  <p>Formaldehyde is known to lead to an increased incidence of asthma. Tile has zero formaldehyde.</p>	<p>HEALTH</p> <p>ZERO PVC ZERO VOC</p>  <p>Tile is completely PVC and VOC (volatile organic compound) free that means a healthier home for you.</p>	<p>HEALTH</p> <p>PLASTIC FREE</p>  <p>Tiles are free from any PBM (Plastic Base Material) materials used in vinyl and LVT.</p>	<p>EASY CARE</p> <p>STAIN RESISTANCE</p> 	<p>EASY CARE</p> <p>EASY TO KEEP CLEAN</p> 	<p>VERSATILITY</p> <p>FLOOR AND WALL</p>  <p>Tile is ideal for both floor and wall application indoor and outdoor.</p>

COLORED BODY PORCELAIN TILE - Rectified Monocaliber

MATT FINISH

OCEAN BLUE



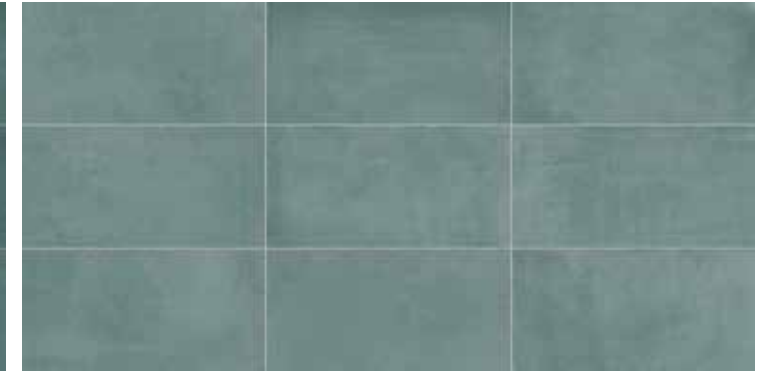
RIVER BLUE



FOREST GREEN



JADE GREEN



Available sizes

Color shading

Available sizes

Color shading



12"x24"
MATT
± 0.35" / 9 mm

3"x12"
MATT
± 0.35"

12"x24"
MATT
± 0.35"

3"x12"
MATT
± 0.35"

Available sizes

Color shading

Available sizes

Color shading



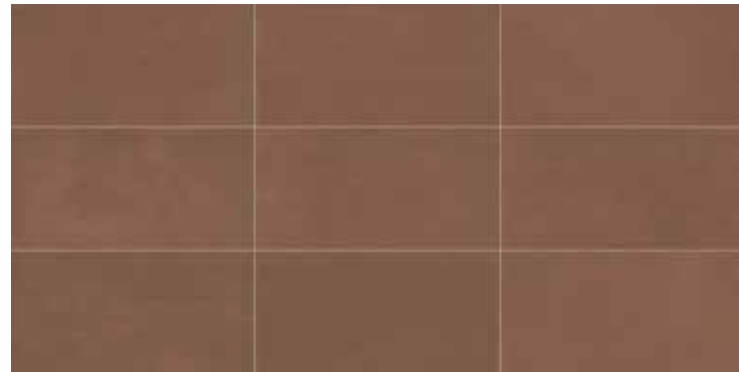
12"x24"
MATT
± 0.35"

3"x12"
MATT
± 0.35"

12"x24"
MATT
± 0.35"

3"x12"
MATT
± 0.35"

LAVA RED



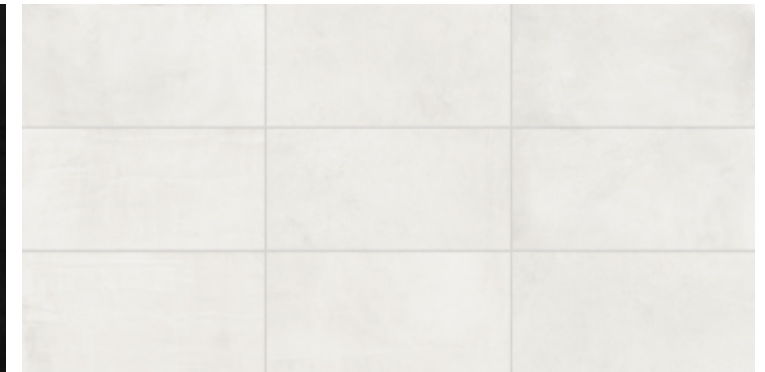
PALE RED



STAR BLACK



STAR WHITE



Available sizes

Color shading

Available sizes

Color shading



12"x24"
MATT
± 0.35"

3"x12"
MATT
± 0.35"

12"x24"
MATT
± 0.35"

3"x12"
MATT
± 0.35"

Available sizes

Color shading

Available sizes

Color shading



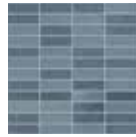
12"x24"
MATT
± 0.35"

3"x12"
MATT
± 0.35"

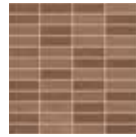
12"x24"
MATT
± 0.35"

3"x12"
MATT
± 0.35"

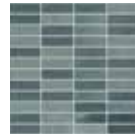
PORCELAIN MOSAICS TILES



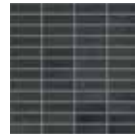
Mix Blue
Mosaic H 2.83"x0.9"
12"x12"



Mix Red
Mosaic H 2.83"x0.9"
12"x12"



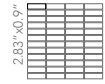
Mix Green
Mosaic H 2.83"x0.9"
12"x12"



Star Black
Mosaic H 2.83"x0.9"
12"x12"



Star White
Mosaic H 2.83"x0.9"
12"x12"



12"x12"
MOSAIC H
± 0.35" / 9 mm

Matches with



Ocean Blue River Blue

Matches with



Lava Red Pale red

Matches with

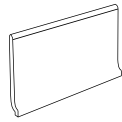


Forest Green Jade Green

TRIM PIECES

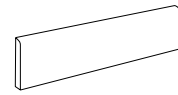
COORDINATED COVE BASE AND BULLNOSE FROM VISION AND VISION COLOR COLLECTIONS

COVE BASE



6"x12"

BULLNOSE



3"x24"

	VISION PEARL	VISION TAUPE	VISION CONCRETE	VISION COLOR STAR WHITE	VISION COLOR STAR BLACK	VISION PEARL	VISION TAUPE	VISION CONCRETE	VISION COLOR STAR WHITE	VISION COLOR STAR BLACK
OCEAN BLUE	●	●	●	●	●			●	●	
RIVER BLUE				●					●	
FOREST GREEN	●			●		●			●	
JADE GREEN	●			●		●			●	
LAVA RED		●		●			●		●	
PALE RED		●		●			●		●	
STAR WHITE				●					●	
STAR BLACK				●	●				●	●



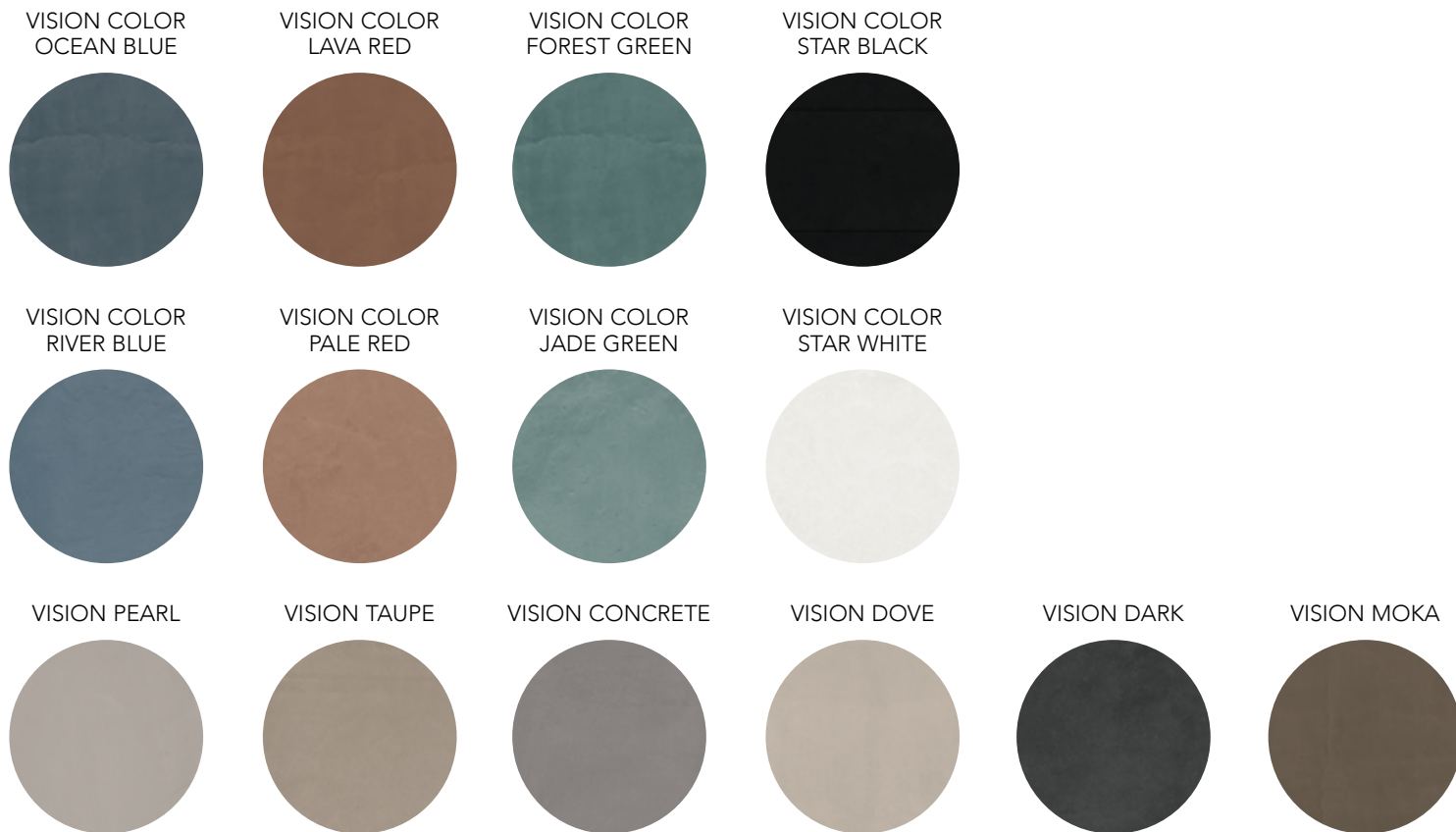
The color of pavers printed in this catalog may differ from actual pavers. Paver reproductions in this catalog are representative only. Slight tone and shade variations are inherent in Porcelain Veneers. Before selecting a color, we recommend that you contact your local representative, who will provide you with a sample piece of the requested paver.

This Porcelain Veneers product is manufactured with a V2 shade variation. Remember that the amount of color as well as the texture of each piece may vary from paver to paver. Inspect the product immediately upon delivery and select pavers from many boxes during installation to minimize and blend any possible color difference.

Color Shading



VISION COLOR WIDENS THE NEUTRAL COLOR PALETTE OF LANDMARK'S VISION RESIN EFFECT WITH NEW CONTEMPORARY COLORS, TO DESIGN ORIGINAL COMBINATIONS.



RECOMMENDED USE

Vision Color matt finish is recommended for indoor floors, walls, countertops, and outdoor walls in commercial and residential applications. The use of Vision Color matt finish is not recommended for outdoor floors (for that application use Frontier20). Landmark recommends an offset no greater than 30%, if a staggered pattern is required for tiles of 20" inches or longer. Landmark recommends the use of leveler for a proper installation.

CARE AND MAINTENANCE

Do not apply any wax or sealer to the product after installation. Regular cleaning is the best way to keep tiles looking good. Use clean, hot water (add household cleaner for more aggressive cleaning). Rinse thoroughly and dry with a soft cloth to prevent water spots. Please visit lcusa.com. For further information regarding the care and maintenance of Landmark products.

WARRANTY

Landmark guarantees that its products will meet or exceed the performance specifications set out in ANSI A137.1- 2012 and in the performance specifications section of the Landmark general catalog. For more information, please visit our website at lcusa.com.

COLORED BODY PORCELAIN TILE - Rectified Monocaliber

PHYSICAL PROPERTIES	TEST ASTM	NORTH AMERICAN STANDARD A137.1*	RESULTS
Water absorption *	C373	≤ 0.5%	COMPLY WITH ANSI A137.1
DCOF Average dynamic coefficient of friction **	BOT 3000 test	≥ 0.42	≥ 0.42
Skid Resistance	DIN 51097	-	-
	DIN 51130		
Resistance to freeze/thaw cycling *	C1026	As reported	RESISTANT
Resistance to thermal shock	C484	As reported	RESISTANT
Warpage (edge)	C485	Warpage ± 0.4% or ± 0.05 in	COMPLY WITH ANSI A137.1
Warpage (diagonal)	C485	Warpage ± 0.4% or ± 0.07 in	COMPLY WITH ANSI A137.1
Wedging	C502	± 0.25% or ± 0.03 in	COMPLY WITH ANSI A137.1
Chemical resistance	C650	As reported	UNAFFECTED
Resistance to stain	C1378	As reported	UNAFFECTED
Thickness	C499	Range: 0.04 in	COMPLY WITH ANSI A137.1
Breaking strength	C648	250 lbf or greater	COMPLY WITH ANSI A137.1

* Average values referred to our production and related to the matt finish of the product.

** As far as values relating to the matt finish of the product and to tests carried out by certified external laboratories whose results are available upon request at Headoffice, we are willing to check the lot you are interested in purchasing.

- Be sure to use tiles belonging to the same caliber.
- Test results are available on request.
- The information provided can be subject to change. Please refer to lcusa.com for the latest, most accurate and up-to-date information.





Landmark Ceramics - UST, Inc.
1427 N. Main Street
Mount Pleasant, TN 38474

Tel. 931.325.5700

www.lcusa.com

LEARN MORE ABOUT

