



Feeling^{DW}
NATURAL CONTEMPORANEITY



 **LANDMARK**
CERAMICS



 **LANDMARK**

“Design Work” is a framework of ceramic surfaces for contemporary architectural projects. The floor and wall collections play with evocative materials drawing out sophisticated ceramic combinations with new design materials. Design Work is synonymous with design freedom: the colors are chosen to maximize the possible combinations between collections and within them. This creative freedom is dynamic and durable, thanks to the technical characteristics of porcelain stoneware, for use in a variety of elegant, modern residential and commercial environments.

A new **landmark** in the ceramic industry

Landmark ceramics is an American company, based in Tennessee that has set out to research, manufacture and sell top quality porcelain ceramics in North America, taking advantage of the proven experience of the Gruppo Concorde, an international leader in the sector. Technological innovation, market presence, attention to detail, the welfare of people and the environment, efficient service and a thorough product range make Landmark a new benchmark in the North American market for those who are looking for a reliable partner for any building and architecture project using US made top quality porcelain tiles.



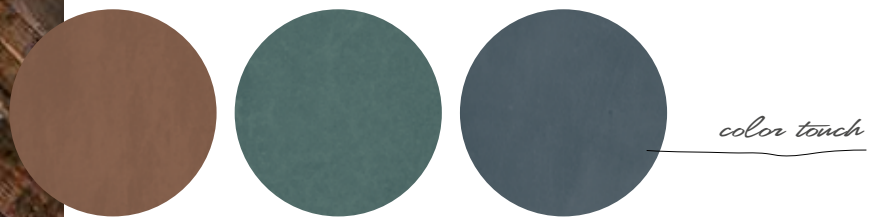
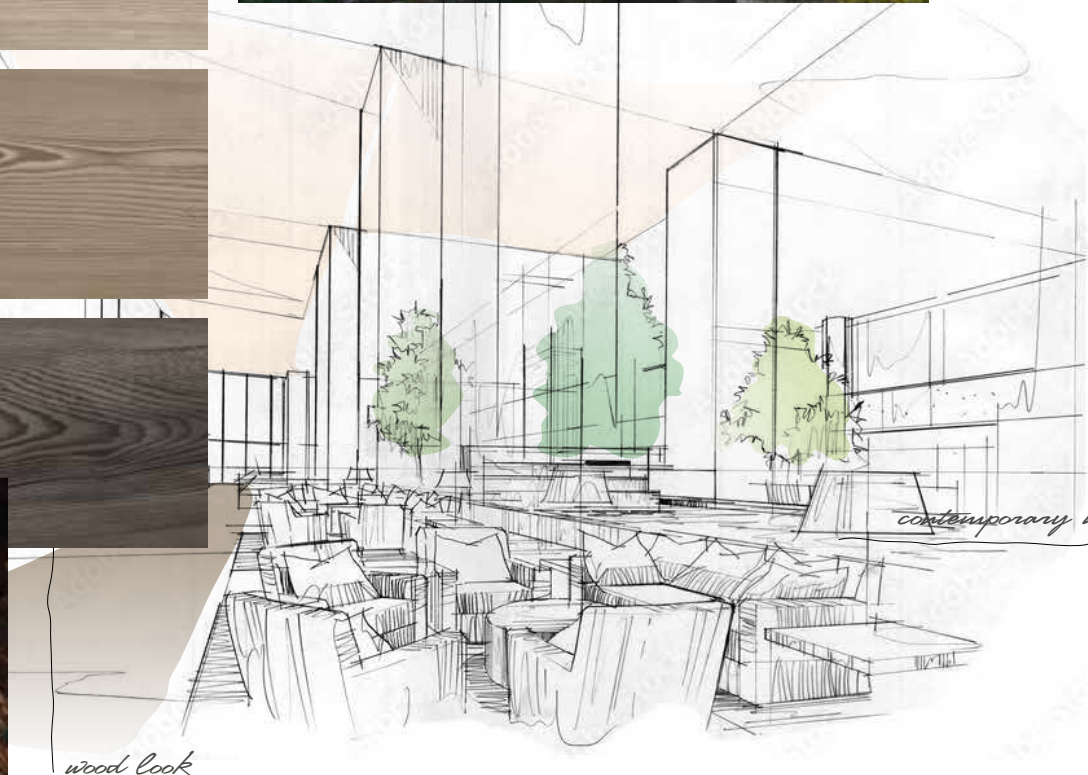
Feeling 
NATURAL CONTEMPORANEITY



Feeling is a collection of refined porcelain tiles inspired by the sophisticated nature of wooden plank. Each surface reproduces the veining and the soft **natural shades of the wood**. A prestigious look to add a **welcoming and cozy atmosphere**, giving a distinctive style and a sense of authenticity to the most exclusive spaces.

Feeling THE CONTEMPORARY.

With 4 different colors, the collection reveals an innate **harmony between contemporary design and natural mood**. A dynamic dialogue that surprises with its versatility and allows you to design an enveloping atmosphere in freedom opening up new original combinations with all other looks of the **Landmark Design Work project**. In fact, Feeling is perfectly matchable with the entire family of Design Work project.



urban living

wood look

contemporary mood

color touch



peaceful time

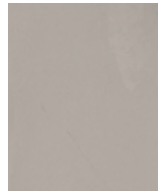
river blue



ocean blue



vision pearl



FEELING *safe.*

The natural appeal of the porcelain surfaces conveys a relaxing atmosphere without sacrificing an essential mood, creating a contemporary dialogue that enhances the elegance in any room. With Feeling, you don't have to worry about anything. In fact, it's **waterproof, easy to clean, and resistant to scratches or dents** because it's made out of the most high-quality porcelain.



honey



PROJECT
FLOOR DESIGN
Feeling Honey - 8"x40"
Vision Pearl - 24"x48"
WALL DESIGN
Vision Pearl - 24"x48"

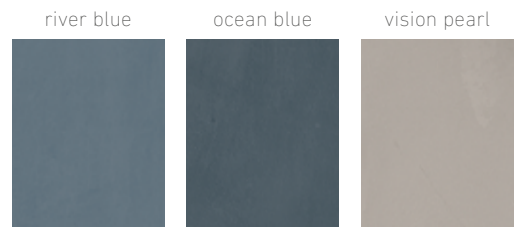
FEELING PERFECTLY REPRODUCES THE **LOOK OF THE TRADITIONAL WOODEN FLOORS**, ADDING AN EVERGREEN CLASSIC ELEMENT EVEN TO INTERIORS FURNISHED IN A MODERN STYLE.



PROJECT

- FLOOR DESIGN
- Feeling Honey - 8"x40"
- Vision Pearl - 24"x48"
- Vision Color Ocean Blue 12"x24"
- WALL DESIGN
- Feeling Honey - 8"x40"
- Vision Pearl - 24"x48"
- Vision Color Ocean Blue 12"x24"





FEELING *calm.*

Design a regenerating atmosphere with the wooden look of Feeling, for a **wellness break** in a suggestive setting thanks to its **warm color palette**. Also Feeling is perfect for any indoor setting thanks to its water proof features, resistance to any chemical cleaning agent as well as scratches and dents.

relaxing time



PROJECT
 FLOOR DESIGN
 Felling Honey - 8"x40"
 WALL DESIGN
 Vision Color Ocean Blue / River Blue - 3"x12"
 Vision Pearl - 24"x24"

FEELING^{DW}

COMBINED WITH THE OTHER COLLECTIONS OF THE DESIGN WORK PROJECT, **FEELING PLAYS WITH COLORS** AND LOOK IN LIGHT CADENCES AND SOFT CONTRAST.



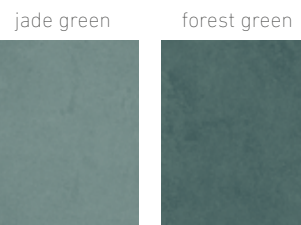
PROJECT
FLOOR DESIGN
Felling Honey - 8"x40"
WALL DESIGN
Vision Color Ocean Blue / River Blue - 3"x12"
Vision Pearl - 24"x24"

your urban corner

FEELING *free.*



The contemporary nuances of the wood effect enhance the glamour of the space and show off an exclusive setting with its trendy texture. Thanks to higher technical performances, Feeling combines **practicability and durability for residential and commercial applications for both floors and walls.**



PROJECT

FLOOR DESIGN
Feeling Oak - 8"x40"
WALL DESIGN
Feeling Oak - 8"x40"
Vision Color Jade Green - 12"x24"
FIREPLACE
Masterplan White Avenue - 24"x48"

LANDMARK'S PORCELAIN TILES ARE **EXTREMELY DURABLE** AND DON'T FEAR THE STRESSES OF EVERYDAY LIFE, RESISTING DENTS, SCRATCHES, AND STAINS.



PROJECT

FLOOR DESIGN

Feeling Oak - 8"x40"

WALL DESIGN

Feeling Oak - 8"x40"

Vision Color Jade Green - 12"x24"

FIREPLACE

Masterplan White Avenue - 24"x48"

BACKSPLASH

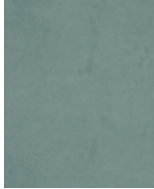
Vision Color Mosaic H Mix Green - 12"x12"





warm materials

jade green



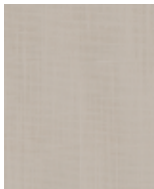
forest green



tartan warm



white cotton



FEELING *stylish.*

The warmth and intense and deep wood effects are a choice of an **exclusive elegance that never goes out of style.** All colors of Feeling are conceived to play along with the tones of the other surfaces inside the Design Work, creating exclusive contrasts.

chestnut



PROJECT

FLOOR DESIGN

Feeling Chestnut - 8"x40"

Soul White Cotton - 6"x24" / 12"x24"

WALL DESIGN

Soul Tartan Warm - 24"x24"



FEELING CREATES A
TAILOR-MADE SPACE FOR EVERY
NEED AND TASTE. A PERFECT
SOLUTION WHEREVER HIGH
PERFORMANCES ARE REQUIRED.

PROJECT

FLOOR DESIGN

Feeling Chestnut - 8"x40"

Soul White Cotton - 6"x24" / 12"x24"

WALL DESIGN

Vision Color Forest Green - 12"x24" / 3"x12"

Soul Tartan Warm - 24"x24"





natural design

river blue

ocean blue



FEELING *chic.*

The distinctive zig-zag herringbone installation joins the charm of a classy elegance to a contemporary pattern of intertwining lines, giving personality to any commercial space. With feeling, you're free to design infinite installation schemes because it is rectified and monocaliber.



PROJECT
FLOOR DESIGN
Feeling Maple - 8"x40"
WALL DESIGN
Vision Pearl - 24"x48"



OFFERING AN AUTHENTIC LOOK THAT RECREATES THE TEXTURE OF WOOD IN DETAIL, FEELING GUARANTEES TECHNICAL QUALITIES FAR SUPERIOR TO THOSE OF THE NATURAL MATERIAL.

PROJECT

FLOOR DESIGN

Feeling Maple - 8"x40"

WALL DESIGN

Vision Color River Blue - 3"x12"

Vision Pearl - 24"x48"

COUNTER

Vision Color River Blue - 12"x 24"



FEELING *sophisticated.*



Feeling provides a perfect solution to design a welcoming atmosphere in a trendsetting space. Thanks to its versatility, the precious wood effect is perfectly suited in every urban context, giving life to a **contemporary and sophisticated** project.



pale red lava red precious ivory



PROJECT

FLOOR DESIGN

Feeling Honey - 8"x40"

Masterplan Precious Ivory - 24"x48"

WALL DESIGN

Vision Color Star Black - 12"x24"

Vision Color Lava Red - 12"x24"

Masterplan Precious Ivory - 12"x24"

THE WOOD EFFECT OF FEELING AND THE CONCRETE EFFECT COMING FROM DESIGN WORK PROJECT CREATE AN ELEGANT MATERIAL CONTRAST, ABLE OF **FILLING THE SPACE WITH STYLE** AND PERSONALITY.



PROJECT

FLOOR DESIGN

Feeling Honey - 8"x40"

Masterplan Precious Ivory - 24"x48"

WALL DESIGN

Vision Color Star Black - 12"x24"

Vision Color Lava Red - 12"x24"

Masterplan Precious Ivory - 12"x24"

Masterplan Geometric Multicolor Warm mosaic G - 13.7"x11.22"

SUSTAINABILITY



RECYCLABLE

Tiles can be recycled inside the production process when not fired yet, or once they have finished their life-cycle can be used as compact base material on the contrary many plastic base material such as vinyl cannot.

SUSTAINABILITY



ECO-FRIENDLY AND SAFE

SUSTAINABILITY



ENERGY EFFICIENT

Tile's inherent thermal mass reduces peak heating and cooling, which helps moderate temperature swings in your home.

HEALTH



NATURAL INGREDIENTS

Tile is made of clays and other naturally-occurring minerals and does not contain chemicals with potential adverse health effects (pvc, voc, formaldehyde, plastic etc...)

SAFETY/DURABILITY



SCRATCH AND DENT RESISTANT

Tile is strong, hard and resistant to most type of scratches. Tile also, being an extremely dense material, doesn't fear any denting damage, like many others flooring materials do.

SAFETY/DURABILITY



FADE AND UV RESISTANT

SUSTAINABILITY



FLOOR HEAT FRIENDLY

SUSTAINABILITY



VERY LONG SERVICE LIFE

Tile when properly installed and maintained can last for decades.

SUSTAINABILITY



COST SAVING OVER TIME

Thanks to its long service life and easy maintenance, porcelain tile is very cost effective over time when compared to flooring products that need to be replaced more frequently.

SAFETY/DURABILITY



RESISTANT TO ACID

SAFETY/DURABILITY



WATER PROOF

Tile is very compact and impervious therefore doesn't absorb. With tile you'll never have to worry about water.

SAFETY/DURABILITY



FIRE PROOF

Tile doesn't burn, melt or give off toxic fumes when exposed to fire.

HEALTH



PREVENT BACTERIA GROWTH

Tile is completely inhospitable to bacteria. That means no mold or mildew, and a healthier home for you.

HEALTH



ZERO ALLERGENES

Tile is both hard and impervious therefore inhospitable to dust mites, bacteria, fungi, mold and other irritants.

HEALTH



ZERO SMOKE DEVELOPMENT

Tile never gives off toxic fumes, even when exposed to fire.

SAFETY/DURABILITY



DOESN'T BEND

Tile is hard and compact.

SAFETY/DURABILITY



PET FRIENDLY

Tile is both dog and cat scratch proof.

SAFETY/DURABILITY



RESISTANT TO FROST

Tile is snow and ice proof.

HEALTH



ZERO FORMALDEHYDE

Formaldehyde is known to lead to an increased incidence of asthma. Tile has zero formaldehyde.

HEALTH



ZERO PVC ZERO VOC

Tile is completely PVC and VOC (volatile organic compound) free that means a healthier home for you.

HEALTH



PLASTIC FREE

Tiles are free from any PBM (Plastic Base Material) materials used in vinyl and LVT.

EASY CARE



STAIN RESISTANCE

EASY CARE



EASY TO KEEP CLEAN

VERSATILITY



FLOOR AND WALL

Tile is ideal for both floor and wall application indoor and outdoor.

COLORED BODY PORCELAIN TILE - Rectified Monocaliber

MATT FINISH

HONEY



Available sizes



8"x40"
MATT
±0.35" / 9 mm

Color shading



V2

MAPLE



Available sizes



8"x40"
MATT
±0.35"

Color shading



V2

OAK



Available sizes



8"x40"
MATT
±0.35"

Color shading



V2

CHESTNUT



Available sizes



8"x40"
MATT
±0.35"

Color shading



V2

The color of tiles printed in this catalog may differ from actual tiles. Tile color reproductions in this catalog are representative only. Slight tone and shade variations are inherent in porcelain tiles. Before selecting a color, we recommend that you contact your local representative, who will provide you with a sample piece of the requested tile.

This porcelain tile product is manufactured with a V2 shade variation. Remember that the amount of color as well as the texture of each piece may vary from tile to tile. Inspect the product immediately upon delivery and select tiles from many boxes during installation to minimize and blend any possible color difference.

Color Shading



V1

UNIFORM APPEARANCE



V2

SLIGHT VARIATION



V3

MODERATE VARIATION



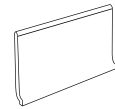
V4

SUBSTANTIAL VARIATION

COLORED BODY PORCELAIN TILE - Rectified Monocaliber

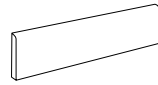
COORDINATED COVE BASE AND BULLNOSE FROM VISION, VISION COLOR COLLECTIONS

COVE BASE



6"x12"

BULLNOSE



3"x24"

	VISION DOVE	VISION TAUPE	VISION MOKA	VISION COLOR STAR WHITE	VISION COLOR STAR BLACK	VISION DOVE	VISION TAUPE	VISION MOKA	VISION COLOR STAR WHITE	VISION COLOR STAR BLACK
FEELING HONEY	●			●		●			●	
FEELING OAK	●			●		●			●	
FEELING MAPLE		●		●			●		●	
FEELING CHESTNUT			●	●	●			●	●	●

RECOMMENDED USE

Feeling matt finish is recommended for indoor floors, walls, countertops, and outdoor walls in commercial and residential applications. The use of Feeling matt finish is not recommended for outdoor floors (for that application use Grip finish or Frontier20). Landmark recommends an offset no greater than 30%, if a staggered pattern is required for tiles of 20" inches or longer. Landmark recommends the use of leveler for a proper installation.

CARE AND MAINTENANCE

Do not apply any wax or sealer to the product after installation. Regular cleaning is the best way to keep tiles looking good. Use clean, hot water (add household cleaner for more aggressive cleaning). Rinse thoroughly and dry with a soft cloth to prevent water spots. Please visit lcusa.com. For further information regarding the care and maintenance of Landmark products.

WARRANTY

Landmark guarantees that its products will meet or exceed the performance specifications set out in ANSI A137.1- 2012 and in the performance specifications section of the Landmark general catalog. For more information, please visit our website at lcusa.com.

COLORED BODY PORCELAIN TILE - Rectified Monocaliber

PHYSICAL PROPERTIES	TEST ASTM	NORTH AMERICAN STANDARD A137.1*	RESULTS
Water absorption *	C373	≤ 0.5%	COMPLY WITH ANSI A137.1
DCOF Average dynamic coefficient of friction **	BOT 3000 test	≥ 0.42	≥ 0.42
Resistance to freeze/thaw cycling *	C1026	As reported	RESISTANT
Resistance to thermal shock	C484	As reported	RESISTANT
Warpage (edge)	C485	Warpage ± 0.4% or ± 0.05 in	COMPLY WITH ANSI A137.1
Warpage (diagonal)	C485	Warpage ± 0.4% or ± 0.07 in	COMPLY WITH ANSI A137.1
Wedging	C502	± 0.25% or ± 0.03 in	COMPLY WITH ANSI A137.1
Chemical resistance	C650	As reported	UNAFFECTED
Resistance to stain	C1378	As reported	UNAFFECTED
Thickness	C499	Range: 0.04 in	COMPLY WITH ANSI A137.1
Breaking strength	C648	250 lbf or greater	COMPLY WITH ANSI A137.1

* Average values referred to our production and related to the matt finish of the product.

** As far as values relating to the matt finish of the product and to tests carried out by certified external laboratories whose results are available upon request at Headoffice, we are willing to check the lot you are interested in purchasing.

- Be sure to use tiles belonging to the same caliber.
- Test results are available on request.
- The information provided can be subject to change. Please refer to lcusa.com for the latest, most accurate and up-to-date information.





Landmark Ceramics - UST, Inc.

1427 N. Main Street
Mount Pleasant, TN 38474

Tel. 931.325.5700

lcusa.com

LEARN MORE ABOUT

